



VSF PROJECT LIMITED

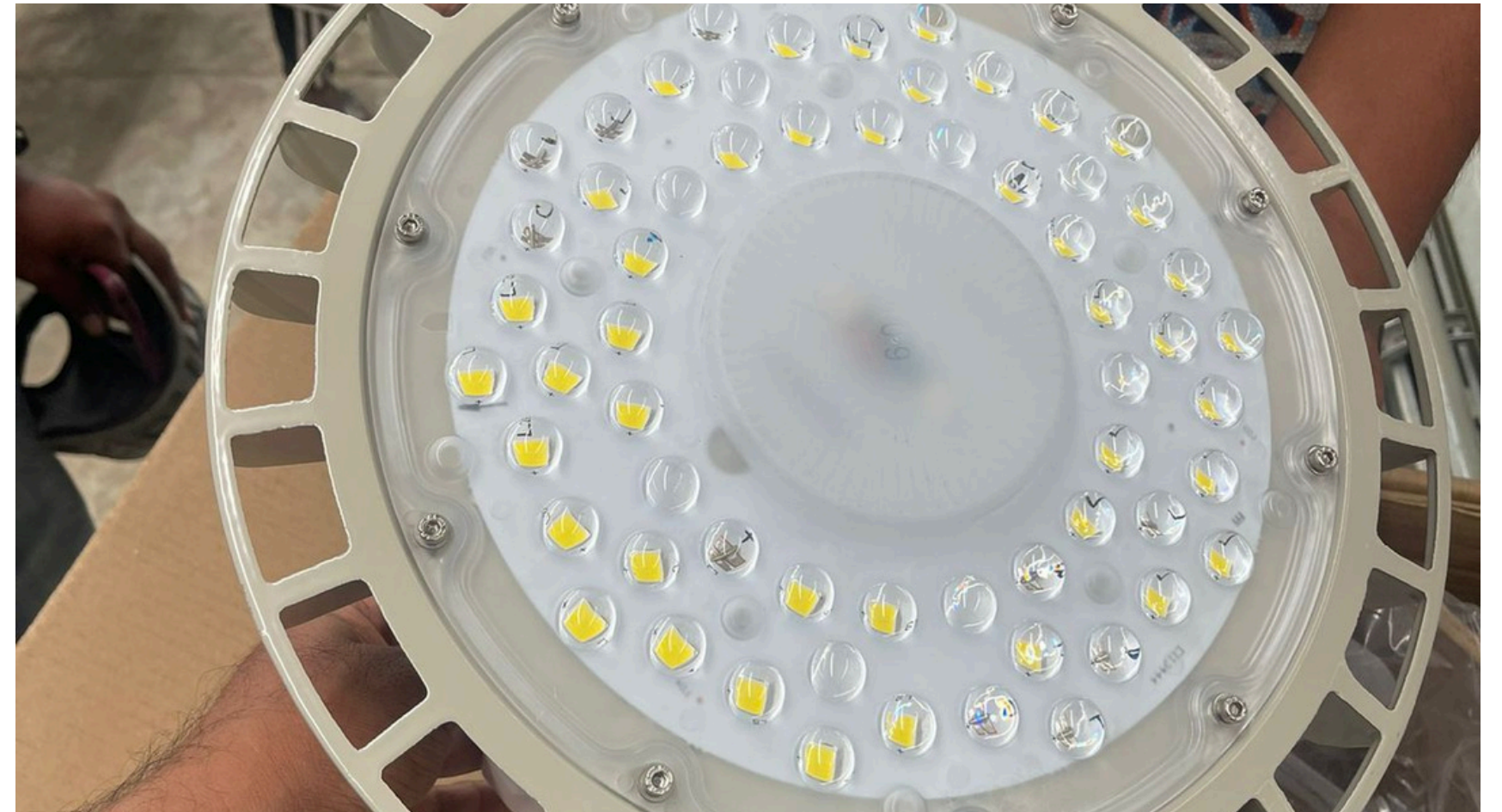
WWW.VSFPROJECT.COM

JULY 2025



WAREHOUSE INTERNAL ELECTRICAL WORK

**DRAWING OF ELECTRICAL ARMoured CABLES
AND INSTALLATION OF INTERNAL WAREHOUSE
LIGHTING IS CURRENTLY IN PROGRESS**

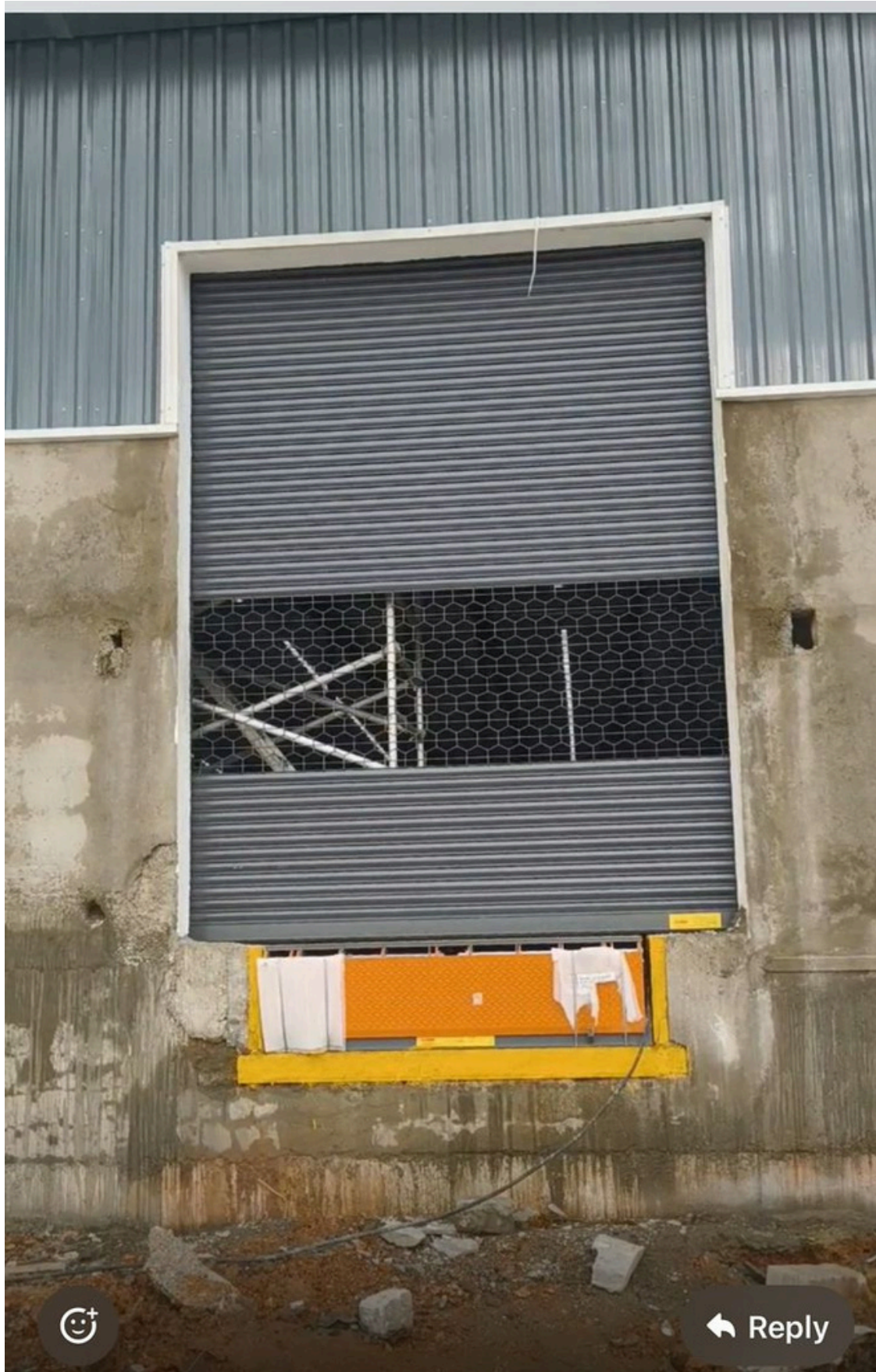


FIXING OF GI CABLE TRAYS AND CABLE DRESSING FOR WAREHOUSE LIGHTING





FIXING OF WATER PIPES FROM THE TOP OF THE WAREHOUSE TO THE GROUND-LEVEL DRAINS AROUND THE WAREHOUSE IS IN PROGRESS



FIXING OF WAREHOUSE ROLLING SHUTTERS IS IN PROGRESS





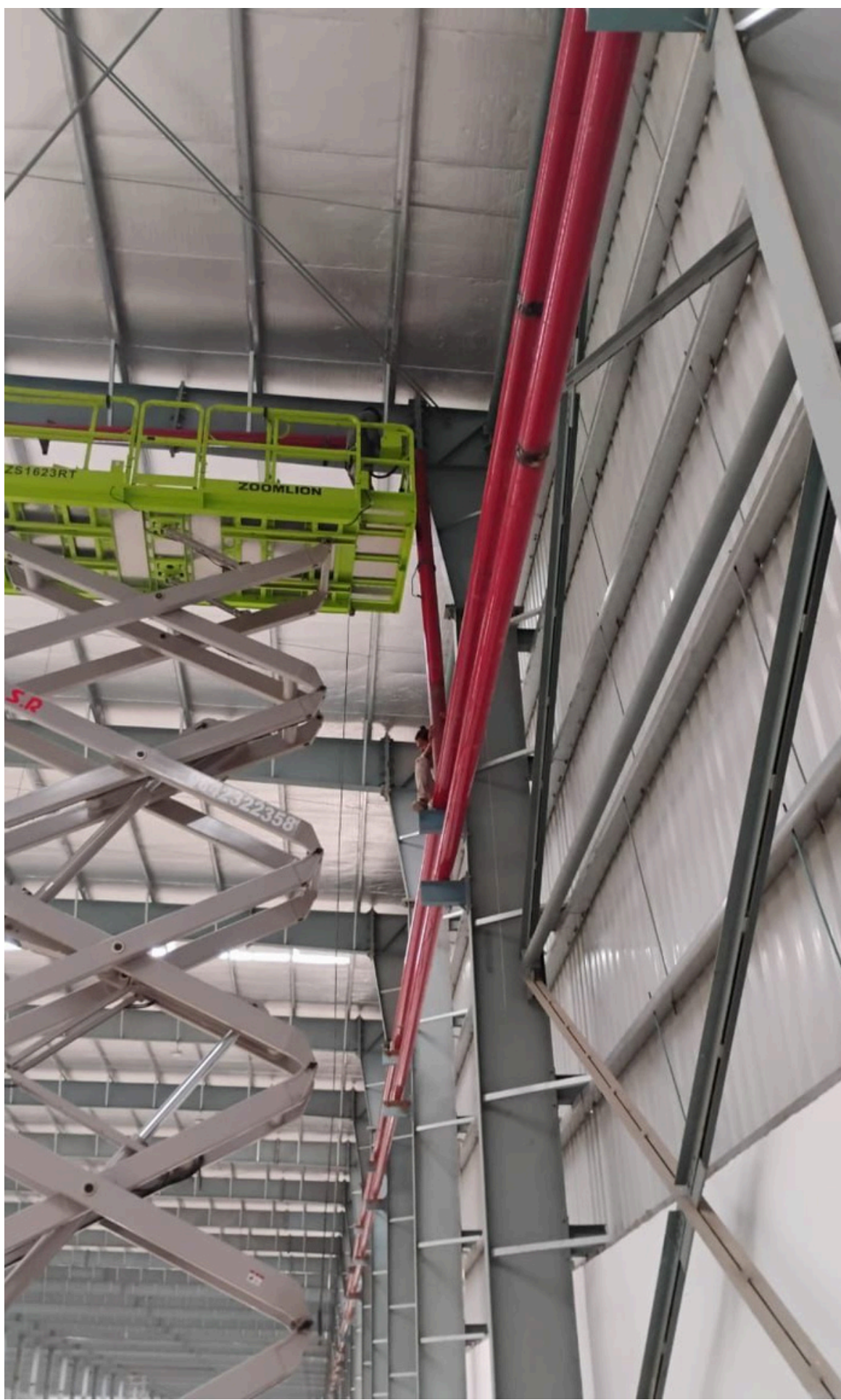
**PLACING OF DOCK
LEVELLERS IN
POSITION AND
WELDING WORKS
ARE IN PROGRESS**





FIRE FIGHTING WORK IS IN PROGRESS







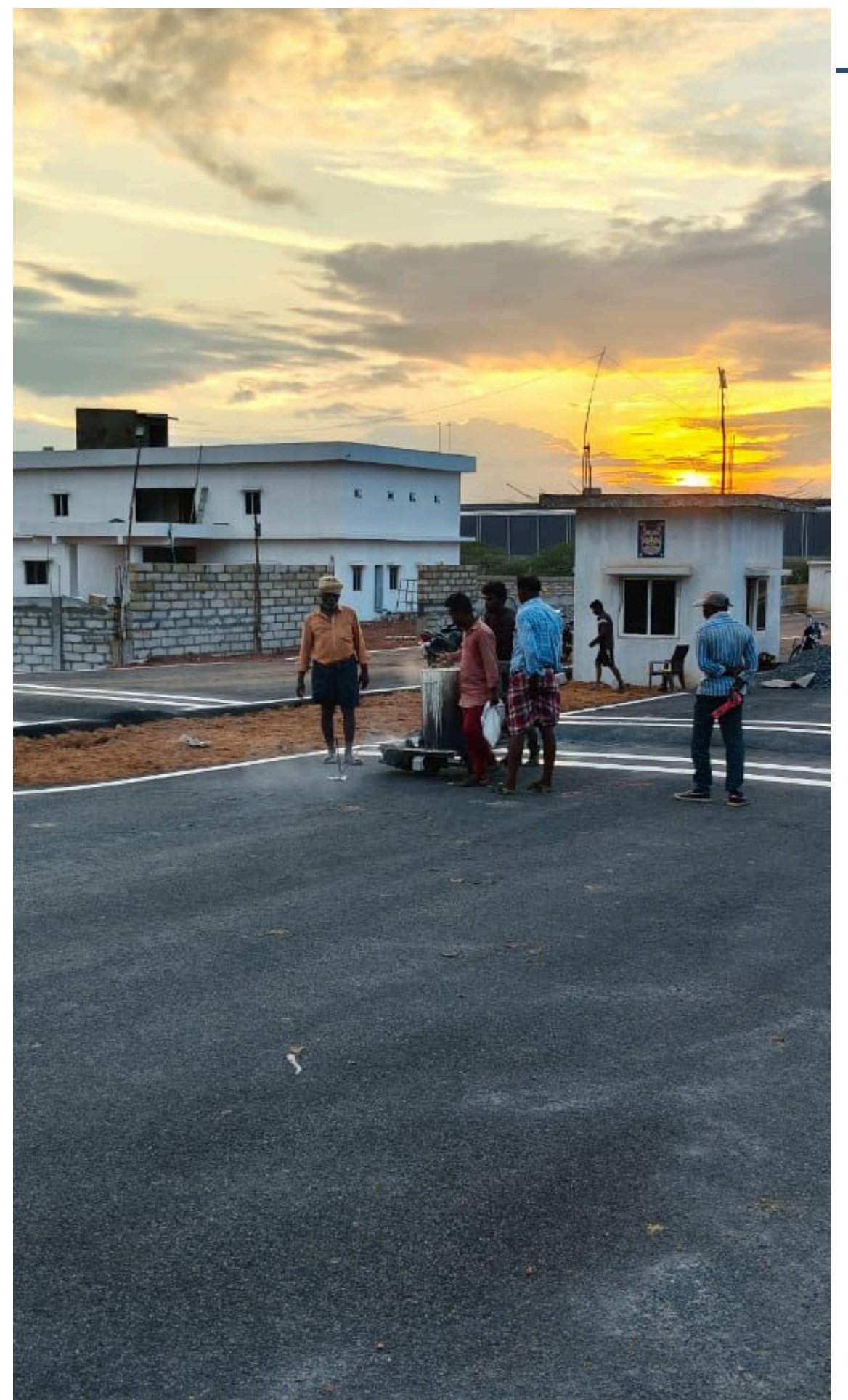
CONSTRUCTIONS OF STORM WATER DRAINS ARE IN PROGRESS

CONSTRUCTION OF DRAINS AROUND WAREHOUSE





PLACING AND FIXING OF PANEL BOARDS ALONG WITH EARTHING IS PROGRESS



MARKING OF WHITE LINES ON BT ROAD AND PAINTING OF SPEED BREAKERS IS IN PROGRESS

CANOPY ERECTION IS IN PROGRESS



PAINTING WORK IS IN PROGRESS





**CIVIL AND PLUMBING WORKS
FOR SEWAGE TREATMENT
PLANT ARE UNDER
PROGRESS**





**FINAL PAINTING WORKS FOR
BUILDINGS ARE UNDER
PROGRESS**

THANK YOU

